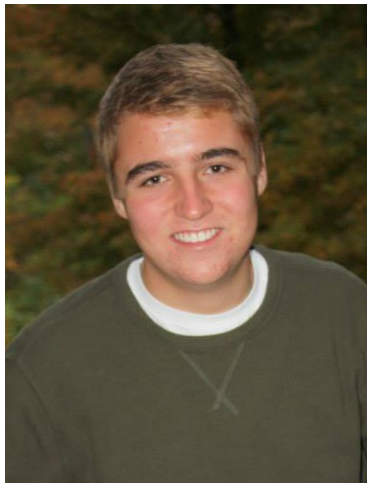


Lilly Scholar Chosen



OCCF would like to congratulate **Jacob Tuell** on all of his hard work and wish him luck in the future.

One student from Orange County has been named recipient of the four-year, full-tuition scholarship as the Orange County Community Foundation 2014 Lilly Endowment Community Scholar.

Jacob Ryan Tuell will receive full tuition to the Indiana college of his choice and a \$900 yearly stipend for required books and equipment.

The son of Robert and Stefani Tuell, Jacob will be studying animal science at Purdue University, with plans of becoming a veterinarian. A 2014 graduating senior from Paoli Junior Senior High School, Jacob has been active in diverse areas of service. His sports activities included Varsity Tennis Team, and he was awarded an Academic All-State Honorable Mention from the Indiana High School Tennis Coaches Association. While attending high school, he was active in the Super Mileage Team, National Honor Society, Future Farmers of America, Spanish Club and Booster Club, and he

participated in tutoring and study table programs. His outside interests included ten years of 4-H and assistance with Running Start.

Applicants for the 2014 Lilly Endowment Community Scholarship were required to hold an SAT score of 1500 or above, rank in the top 25% of their class, receive an academic honors diploma, and have gained acceptance into an accredited Indiana college. Applicants were evaluated on academic skills; character traits such as integrity, responsibility, honesty, leadership and dependability; involvement in community and school; and financial need.

For more information regarding the Lilly Endowment Scholarship program, contact the Orange County Community Foundation at (812) 723-4150.

Grants

The Orange County Community Foundation is once again offering grant funding opportunities to charitable organizations and projects in Orange County, Indiana. There are currently three grants open including the Orange County Child Care Co-Operative Grant, the Orange County Education Fund Grant, and the

Orange County Community Foundation Unrestricted Grant.

All grants are due at the OCCF office by 4:00 PM on Friday, April 25, 2014. The recipients of these grants will be announced in May.

The Orange County Community Foundation Youth Council

currently also has an open grant cycle. The applications for this cycle are due Friday, April 11, 2014.

To apply for any of these grants you can pick up an application from the OCCF office or download it at www.orangecountycommunityfoundation.org.

FIND US ONLINE!



Like us on Facebook at: fb.com/orangecountycf



You can now follow us on Twitter at: @OrangeCountyCF



Visit our website at: www.orangecountycommunityfoundation.org

INSIDE THIS ISSUE:

- Lilly Recipient |
- Grants |
- Letter Writing Campaign 2
- Women's Tea 2
- Tax Changes 3

Youth Council Letter Writing Campaign

YOUTH COUNCIL

OCCF's Youth Council provides high school students with a unique opportunity to make a meaningful difference in our community - through philanthropy and community service. The YC

practices the philanthropic pillars of giving of their time, talent and treasure by volunteering, making personal donations to, and granting to local non-profits.

The Youth Council is currently in the middle of their annual Letter Writing Campaign, requesting the support of local businesses

and individuals. Although they do their own fund-raising, the council is largely dependent on the generosity of donations. If you would like to donate to the OCCF Youth Council, please address your contribution to the Community Foundation at 112 West Water Street, Paoli, IN 47454.

Your generous gifts allows the council to continue their programming, as well as to help support other programs through grants.

Together we can help create dedicated and caring citizens of Orange County today, tomorrow and in the future.

Women's Tea

The OCCF Women's Giving Circle will be hosting a late afternoon tea on Thursday, May 8, 2014 from 4:00 P.M. until 6:00 P.M.

The event, which will be held at Blueberry Hill Estate, will help uninsured and underinsured Orange County women with diagnostics and health issues such as breast, cervical, endometrial, uterine and ovarian cancers.

During the event, attendees will enjoy tea, refreshments, a hat contest, and other goodies! There will also be various speakers from local women's health programs and services.

The tea is a great opportunity for the ladies of Orange County to learn what the Giving Circle offers, as well as to come together to discuss the challenges facing local women.



This event is sponsored by The Orange County Community Foundation and IU Health Paoli Hospital Foundation.

Goodwill donations accepted by those attending.

Proceeds will benefit: Orange County Women's Giving Circle programs.

To register for this event Call 723.4150 by 5 P.M. May 1, 2014 .



Come express your
generosi-tea!

Changes in Indiana Add-Backs

Taxpayers may or may not have noticed changes on the 2013 Indiana tax return concerning charitable distributions. Firstly, current year legislation has eliminated the IRA charitable distribution add-back, retroactive to January 1, 2012. Anyone who reported an IRA charitable distribution add-back on their Indiana income tax return for 2012 should refer to IT-40 instructions on how to update the 2013 tax filing.

Options for those who included the IRA charitable distribution add-back on their 2012 state tax return may include filing an amended return for tax year 2012, or to report the amount to be adjusted on Schedule I of the 2013 state tax return, using a special 3-digit code indicator. For example, a \$1,900 IRA charitable distribution add-back was reported on the 2012 state return, instead of opting to amend that return, filer may report it on the 2013 state return on Schedule I. The entry would be listed under line 7 using the unique 3-digit code number 302, and reported as a negative number (-\$1,900).

This is only one add-back item eliminated for the 2013 tax year and made retroactive to January 1, 2012. Others include motorsports entertainment complex expense, qualified advanced mine safety equipment expense, qualified leasehold improvement property expense, qualified restaurant property expense, qualified retail improvement property expense, qualified transportation fringe expense, and tuition and dues deductions. Additional add-backs have been eliminated retroactive to January 1, 2013. Those include educator expense, employer-provided educational expense, qualified environmental remediation costs, oil and gas well depletion, qualified electric utility amortization, RIC dividends to nonresident aliens, start-up expenditures, and student loan interest.

As always, income tax filers should consult Internal Revenue Service instructional publications or their tax advisors when preparing tax returns that include items with which they may not be completely familiar. This will eliminate problems regarding the return, as well as ensure that the filer is receiving the fullest benefit of paid taxes and allowances.

*“It's not how
much we give
but how much
love we put
into giving.”*

— *Mother Teresa*



ORANGE COUNTY COMMUNITY
FOUNDATION

112 West Water St.– Paoli, IN 47454

Phone: 812.723.4150
Fax: 812.723.7304

www.orangecountycommunityfoundation.org

Non-Profit Org.
U.S. Postage Paid
Paoli, IN
47454
Permit No. 115

ADDRESS SERVICE REQUESTED

*Connecting People Who Care
with Causes that Matter to Orange County...*



BE PROUD OF YOUR SPACE!

Clean up, fix up, paint up, spruce up for the spring and summer months ahead...

Keep your yards looking fresh and inviting.

Pick up all trash and litter and put it in its proper place, sweep off sidewalk areas, freshen up that landscape area, plant trees or flowers.

Let every visitor to Orange County know we're proud of our home and its beauty.

**Orange County is beautiful,
let's keep it that way.**

**CLEAN UP
GREEN UP**